

OEKO
TEX®



Sedex®

Maven Design Ltd.

Corporate Profile

100% Export Oriented
Knit Garments Manufacturer.



PRODHAN TOWER

“

We Craft Your Dreams

”



Maven Design Ltd.

(An Export Oriented Knit Industry)

Your Business, Our Business

Company at a glance

Maven Design Ltd. Has a mission to fulfill by surpassing all the requirements of humanitarian Management a role model for others as “A BETTER WORKING PLACE” and unique in its field. Maven Design Ltd. Do and will continue to operate the factory in FULL COMPLIANCE with all the applicable rules and regulations of native land as well as international standard. For improving the working conditions and setting a better working place;

Area of Premises:	37,800 sft
Area of Production Floor:	26,000 sft
Number of Employees:	550 Person
Yearly Turnover:	\$6.0 million
Knitting Capacity:	4 tons
Cutting Capacity:	35,000 pcs/day
Garments Capacity:	28,000 pcs/day
Printing Capacity:	29,000 pcs/day



Maven Design Ltd.

(An Export Oriented Knit Industry)

About Us



MAVEN DESIGN LTD. Where Quality Comes First

Maven Design Limited is a comprehensive manufacturing and exporting company of Bangladesh. It comprises the ultra-modern plants related to garment industry, such as independent knitting, sewing, finishing, and packaging with sufficiently supportive backward linkage facilities. Now a day, our productions sell of high quality, developing by credit standing, and gaining the world through honestly. We strongly believe in Fair Trade liabilities and practice in business towards our esteemed clients. Meanwhile we also carry out a strict quality management system.

Maven Design Limited is fully committed to provide fair wages and good employment opportunities to economically disadvantaged artisans and workers. Maven Design Limited not only believe in supporting living wages and safe & healthy conditions for workers but also adheres to social criteria and environmental principles adding equitable and sustainable system of production and trade funds to achieve Empowering women, Education for Next Generation, Emergency Assistance etc. Our quality has remained the main feature for our success. Our top-notch quality of products with competitive prices make our offerings irresistible

Our Board of Directors



Md. Zahirul Hoque
Chairman



Md. Sabur Khan
Managing Director

“ Since establishment in year 2008 the Company has achieved tremendous growth due to the progressive and futuristic policies of the management. The progressive vision, inspiring leadership and full utilization of its human resource lead the company to greater success ”



Miss. Zarin Tasnim
Director



Md. Mehran Khan
Director



Md. Zariful Haque
Director



Md. Moon Tasir Khan
Director

MDL comprises a futuristic management body

The management team of MDL comprises of dedicated and highly motivated individuals, giving much emphasis on team work and interdependency. They bring with them, experience in the knitting industry and diverse educational backgrounds. MDL has tried to develop a company culture where quality is given top priority, innovation is encouraged, systems are thoroughly followed at every stage of production



Maven Design Ltd.

(An Export Oriented Knit Industry)

Message from the Desk of Managing Director

Maven Design Ltd (MDL) has been leading the knit garment industry of Bangladesh by being in the forefront since long. Registering an average growth of about 20 percent every year for over a decade by now, last year MDL exported knit apparel worth about US\$5.5 million. It foresees the same growth for years yet to come. Infusing together the highbred local crafting artistry, cutting edge western technology and height of professionalism, MDL has specialized itself to emerge as the incarnation of an ultimate knitwear manufacturer, and has been excelling in the global market since its inception in 2012. MDL values its 400 (approx.) member workforce as one of the major components of its growth engine. It customarily conforms to the ILO conventions and other labor as well as factory laws applied in the country, and is very much keen to strengthen relations and develop a better understanding among the owners and employees. All leads to prevailing of a very high standard industrial environment friendly for the workers on one hand and conducive for a higher level of productivity on the other. Almost all of the global giants as the apparel brands are the trade partners of MDL. MDL honors its buyers' trust on it the most. With their support, MDL is moving forward through the way where ethical practices, health & hygiene, safety, security, green environment etc. are met with their appropriate meanings. Yes, we in MDL believe that a shared approach always promises a better tomorrow — in business or beyond.

The **vision** of Maven Design Ltd. (MDL) is to set a benchmark, not only in Bangladesh but also in the world, by which it would be recognized as one of the leading garment manufacturers on the global stage. As it envisages, MDL has evolved itself as an ultra modern and one-stop comprehensive knitwear manufacturing and exporting base, which is independent in knitting, sewing and finishing, and is strengthened with necessary backward linkage advantages.

MDL's products are highly lauded across America, Europe and East Asia. Because, the company strictly sticks to a policy guideline outlined by high quality, innovation and development, credit standing and gaining through honesty.

It strongly believes in Fair Trade responsibilities and carrying out those for the satisfaction of all connected to the entire value chain having its esteemed clients at the center. The company is fully committed to providing fair wages and good as well as equal employment opportunities to the members of the underprivileged section in the society. Providing wages far above the subsistence level, it always ensures a high level of industrial relations and an exemplary status in health and security standards for the people working with MDL. Besides, clean environment and ecological balance, women empowerment as well as equal opportunity and education to the less-privileged next generation too are some of MDL's other priorities that help frame the perspective for its ultimate vision.

The core **mission** of MDL is to provide its customers the best value for their money by way of facilitating them with one-stop knitwear manufacturing as well as sourcing services whereby satisfaction is always guaranteed leaving virtually no room for any complaint. MDL pursues its mission complying with all of the requirements on humanitarian ground, ensuring excellent management practices, and reinforcing working environment in a way that it would be viewed as a model for others to appreciate and follow as "A BETTER WORKING PLACE." MDL operates its factory in FULL COMPLIANCE with all of the rules, regulations and conventions applicable in this industry locally and internationally. As well, MDL is keen to have a corporate culture wherein quality and innovation are perceived as the top priorities and, therefore, it has established its own system of applying inspection procedures thoroughly at each and every stage of production. But yet, though quality is the main feature of MDL's successful mission, its top-quality products are competitive in pricing consideration too.

Our Projects:

Fiber & Design independent knitwear

Maven Design Limited manufactures and export knitwear garments for men's, ladies, children, boys, girls, infant etc. We also produce sportswear, maternity wears as well. Our state-of-the-art knitwear covers almost all of the fibers available in the market.

Our specific products include:

T-Shirt, Pull Over, Cardigans, Pajamas, Ladies Dresses, Polo Shirt, Boxer Shorts, Night Wears etc.



Maven Design Ltd.

(An Export Oriented Knit Industry)

Knitting Process



Our knitting section is well furnished with most modern equipment's which is mentioned below: -

LIST OF CIRCULAR KNITTING MACHINE:

SL NO.	DIA	GAUGE	TRUCK	OPTTION	LYCRA/COTTON	FEEDER	BRAND	ORIGIN	QTY. (SET)
01	30	24	4	S/J OPEN	100%	90	SHIE-DIM	TAIWAN	1 SET
02	32	24	4	S/J OPEN	100%	96	SHIE-DIM	TAIWAN	1 SET
03	34	24	4	S/J OPEN	100%	102	SHIE-DIM	TAIWAN	1 SET
04	38	24	4	S/J OPEN	100%	114	SHIE-DIM	TAIWAN	1 SET
05	40	24	4	S/J OPEN	100%	120	SHIE-DIM	TAIWAN	1 SET
06	42	24	4	S/J	100%	126	SHIE-DIM	TAIWAN	1 SET
07	42	24	6 FIEETER	S/J	100%	252	SHIE-DIM	TAIWAN	1 SET

LIST OF FLEECE KNITTING MACHINE:

SL NO.	DIA	GAUGE	TRUCK	OPTTION		FEEDER	BRAND	ORIGIN	QTY. (SET)
01	30	20	4	FLEECE	100%	90	SHIE-DIM	TAIWAN	1 SET
02	34	20	4	FLEECE	100%	102	SHIE-DIM	TAIWAN	1 SET

COLLAR MACHINE

SL NO.	BRAND	GAUGE	INCH	ORIGIN	QTY. (SET)
01	KAUO HENG	14	80	TAIWAN	01 SET
02	KAUO HENG	14	54	TAIWAN	02 SET

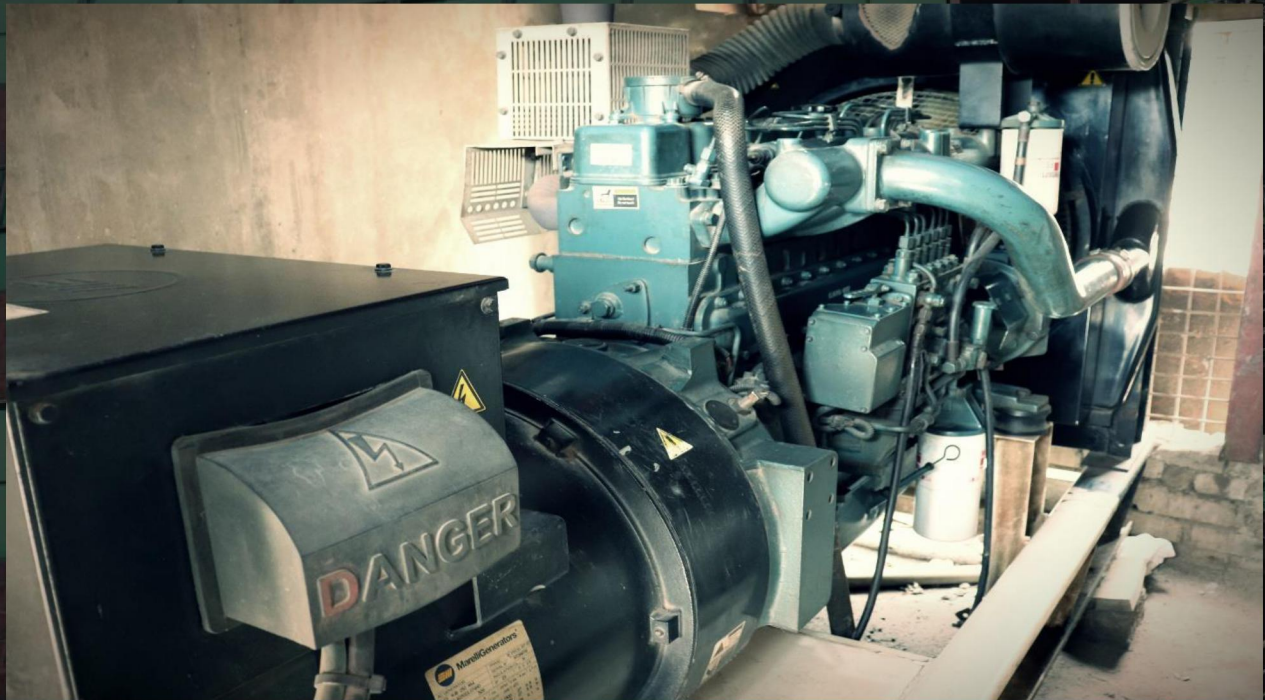


Maven Design Ltd.

(An Export Oriented Knit Industry)

Utility Machineries

Our Country's most important issue is power sector. The government faces lots of problem for supplying the power for industrial sector. Considering all these, at the very beginning of establishment of Maven Design Ltd; we are using our own power generator. We have vast setup for the own power source and generating 24-hour power system



Name of Machine	Brand	Origin	Quantity	Capacity
Generator	Teksan	Turkey	01no.	200 KVA
Boiler	Modern	Bangladesh	01no.	07 kg/hr



BOILER



GENERATOR

Garments Department

1st stage – CAD Section

2nd stage – Cutting Section

3rd stage – Sewing Section

Final stage – Finishing section

LIST OF MACHINERIES FOR CUTTING, SEWING AND FINISHING SECTION

Sl. No.	Category of Machine	Brand	Country of Origin	Qty.
01	SINGLE NEEDLE PLAIN MACHINE	JUKI/BROTHER	CHINA	85 SET
02	OVER LOCK MACHINE	PEGUSAS	CHINA	45 SET
03	OVER LOCK MACHINE	JUKI	JAPAN	20 SET
04	FLAT LOCK CYLINDER BED	PEGUSAS	JAPAN	30 SET
05	FLAT LOCK FLAT BED	PEGUSAS	JAPAN	12 SET
06	FEED OF THE ARM	JUKI	JAPAN	04 SET
07	BUTTON HOLE	JUKI	JAPAN	02 SET
08	BUTTON STITCH	JUKI	JAPAN	02 SET
09	STEAM IRON	SEWOONG	KOREA	15 SET
10	CUTTING MACHINE	KMC	JAPAN	04 SET
11	RIB CUTTER			03 SET
12	THREAD CLEANING MACHINE		TAIWAN	01 SET
13	SNAP BUTTON			02 SET

Quality Control

Maven Design Ltd. (MDL) believes that, in the world apparel market, quality counts. So, it has established a highly qualified and efficient Quality Control (QC) Department. As its quality policy, MDL focuses on providing products at price and service advantages of its clients ensuring height of quality through direct response mechanism.

In order to sustain the command in the key technological areas concerning the garments industry, MDL has made significant investments in acquiring world-best testing and quality assurance equipment and technologies.

The QC team of MDL follows some international standards such as 4-point Fabric Inspection System; Traffic Light System; AQL 2.5; Needle Detection Report; 9-point Quality Check System and many more. As well, it always takes the advantages of GSM Check Reports and Light Box System Reports etc.

The processes that the QC system here customarily undergoes are:

Pattern Test

Trial Inspection

In-line Process

Pre-final Process, and

Final Process

However, having a GPQ (Guideline for Production and Quality) team to oversee the work processes in the QC system, MDL is always ahead in maintaining the best quality for its buyers around the world.



Our Customers

TEXTISS
UNDERWEAR COMPANY



pierre cardin



umbro

FILA



Kappa

FRANCE

INTERSPORT
SPORT TO THE PEOPLE

FRANCE



COCCODRILLO

POLAND

Smartee
All Cotton Knitwear

ITALY

BRIGITTA
MILANO
fashion handbags & accessories

ITALY

polifemo
eye
the mediterranean soul
www.polifemo.com

ITALY

TRADHEL SA
Sports & Leisure Clothing

ITALY

srg Apparel plc
FORWARD THINKING - MARKET LEADING

U.K.

STOKOMANI
DES MARQUES, DES PRIX !

MODE / BEAUTÉ / DÉCO / JOUET

FRANCE



POLAND

**Funky
Kidz**
WEAR

GRESS

M
MERCURY
DESIGNS

LONDON



Maven Design Ltd.

(An Export Oriented Knit Industry)

HRM & Compliance

Maven Design Ltd has a mission to full fill by surpassing all the requirements of Humanitarian Management & to make its working environment a role model for others as "A BETTER WORKING PLACE" and unique in its field. Maven Design Ltd. do and will continue to operate the factory in FULL COMPLIANCE with all the applicable rules and regulations of native land as well as international standard. For improving the working conditions and setting a better working place;

MDL is maintaining the following COC issues:

- > Prohibition of child labour
- > Prohibition of forced labour
- > No discrimination
- > Occupational health & safety (OHS)
- > Disciplinary practices / harassment
- > Freedom of association and right to collective bargaining
- > Welfare facilities
- > Compensation & benefits
- > Working hour
- > Grievance procedure
- > Environmental protection
- > Custom compliance
- > Security compliance

PRODHAN TOWER

Certificates





Our Merchandising department is the star of the department among all the working departments in the Export concern, because Merchandising is the only department having maximum control over the departments and total responsible for Profit and loss of the company. Maven Design Ltd. have strong merchandising dept; the merchandising team who are always concern about the main objectives of their job description that is 4R

Right Quantity	To dispatch right quantity of product what buyer ordered
Right Quality	It should be with right quality as accepted both parties.
Right Cost	Everybody wants more from what they are paid.
Right Time	No one wants to wait idle even in a Restaurant. Keeping delivery schedule is mandatory.

Marketing Concern:

Md. Sabur Khan

Managing Director

eMail: sabur@mavendesignltd.com



Maven Design Ltd.

(An Export Oriented Knit Industry)

CONTRACT INFORMATION

Md. Sabur Khan

Managing Director

Maven Design Ltd.

Cell: 01720538162

eMail: sabur@mavendesignltd.com

PRODHAN TOWER



Maven Design Ltd

(An Export Oriented Knit Industry)



Factory Address:

Pradhan Tower 22/A, Lalpur, Fatullah, Narayangonj, Bangladesh.

Cell: +88-01720538162

Web: www.mavendesignltd.com mail: sabur@mavendesignltd.com



THANK YOU

PRODHAN TOWER



Maven Design Ltd.

(An Export Oriented Knit Industry)